

## Christmas Tree Winners!

We were delighted to receive joint first place in the judges' category for our *Global Connections* Christmas tree at the airport. The general public voted us into joint second place. Both awards were shared with King William's College who had a creative tree based on stationery supplies that they provide to Afghanistan.

Thank you for all the connections that you gave us. We hope you will be able to elaborate your stories for the new wiki site which is coming soon.



## Learning Opportunities

The new *Global Teacher Award* is being offered for the first time on the Island as a series of 5 twilight sessions, beginning Monday 27th February at Castle Rushen High School. It will be run as a whole day course as part of the CPD programme on Thursday 28th June. More information is available at: [www.globalclassrooms.co.uk](http://www.globalclassrooms.co.uk), or you can contact Rosemary here at the One World Centre.

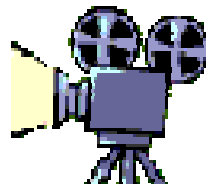
If you would like to discover how to develop a link with a school in another country, or develop one that you have already, there are 3 more courses on offer:

- An Introduction to School Linking Tuesday 27th March, Santon
- Building School Partnerships Thursday 21st June, Santon
- Global Education in Partnerships Thursday 11th October, Santon

And if you'd like to know more about the *Global Dimension*, please contact us for personalised training.

## Film Nights

These continue on Friday evenings at 1930 in the Java Lounge. You can keep an eye on future titles on the events/film page on our website.



## Fairtrade Fortnight

Please see over for a wide range of events that are taking place across

the Island from Monday 27th February to Sunday 11th March. Feel free to organise your own! We will be pleased to add it to our web site

## Seasonal Thought

Benjamin Franklin said: "*If a man empties his purse into his head, no man can take that away from him. An investment in knowledge always pays the best interest*"

## Charity Challenge

The competition is hotting up with in-house finals coming up in the IoM College and secondary schools around the Island. If you would like to come to the final at the Manx Museum on Wednesday 21st March, please contact us. For information about the competition, see:

<http://www.oneworldcharitychallenge.com/>

## Electronic Communication

We are delighted with our new website—many thanks to Martin Kerr for all his work. Please keep an eye on it for up and coming events.

If you have received a hard copy of this newsletter but would be happy for us to e-mail future editions, please let us know.

**Launch of Fairtrade Fortnight**

Monday 27th February 1800 St Johns Mill £12.50 for: Meal and a Movie Experience flavours from around the world and enjoy watching *Black Gold* Book with Jill on 802 900

**Fairtrade Chocolate Workshop**

Wednesday 29th February 1400-1700 St Johns Mill £29.99 Make your own! Tickets from Jane, tel: 07817 908 685



**FAIRTRADE FORTNIGHT**

**27th February-11th March**

**The Isle of Man welcomes Massatoma Mounkoro, a cotton farmer from Mali Sponsored by the Fairtrade Foundation**

**Massatoma meets local farmers**

Wednesday morning, 7th March

**Coffee Morning**

Saturday 3rd March 1000-1200 St Stephen's Church Hall, Sulby *Fair Trade Coffee production in Nicaragua* by Rosemary Clarke

**Coffee Morning**

1000-1200 Saturday 10th March with Massatoma and a Fairtrade stall. Promenade Methodist Church, Douglas.

**Lunch for MHKs and the Business Community**

1300 Thursday 8th March at Tynwald, with Massatoma Tickets from the Chamber of Commerce 674 941 Sponsored by the Co-op

**Youth Event**

Saturday 10th March St Ninians Church 19-2100 Range of activities and the opportunity to meet Massatoma,

**Bananas! Film evening**

Friday 2nd March Java Lounge Free admission, donations welcome

**STEP THIS WAY**

In 2012 we want everyone to take a step for Fairtrade and bring a brighter future to farming communities in the developing world.

**CLICK HERE »**

**TAKE A STEP IN 2012**  
Register your step at [fairtrade.org.uk/step](http://fairtrade.org.uk/step)

**FAIRTRADE**

Further information from Rosemary at the One World Centre  
Tel: 800 464  
[info@owciom.org](mailto:info@owciom.org)